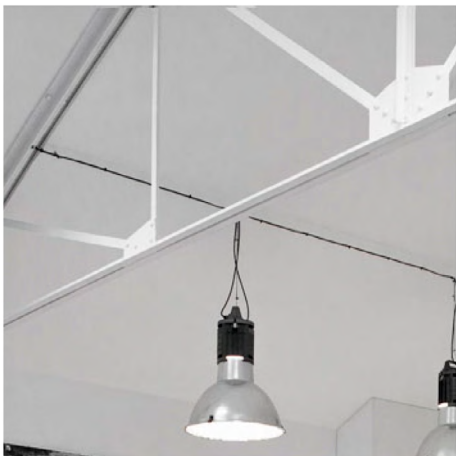


www.**camera**-studio.es  
**camera**studio



Production

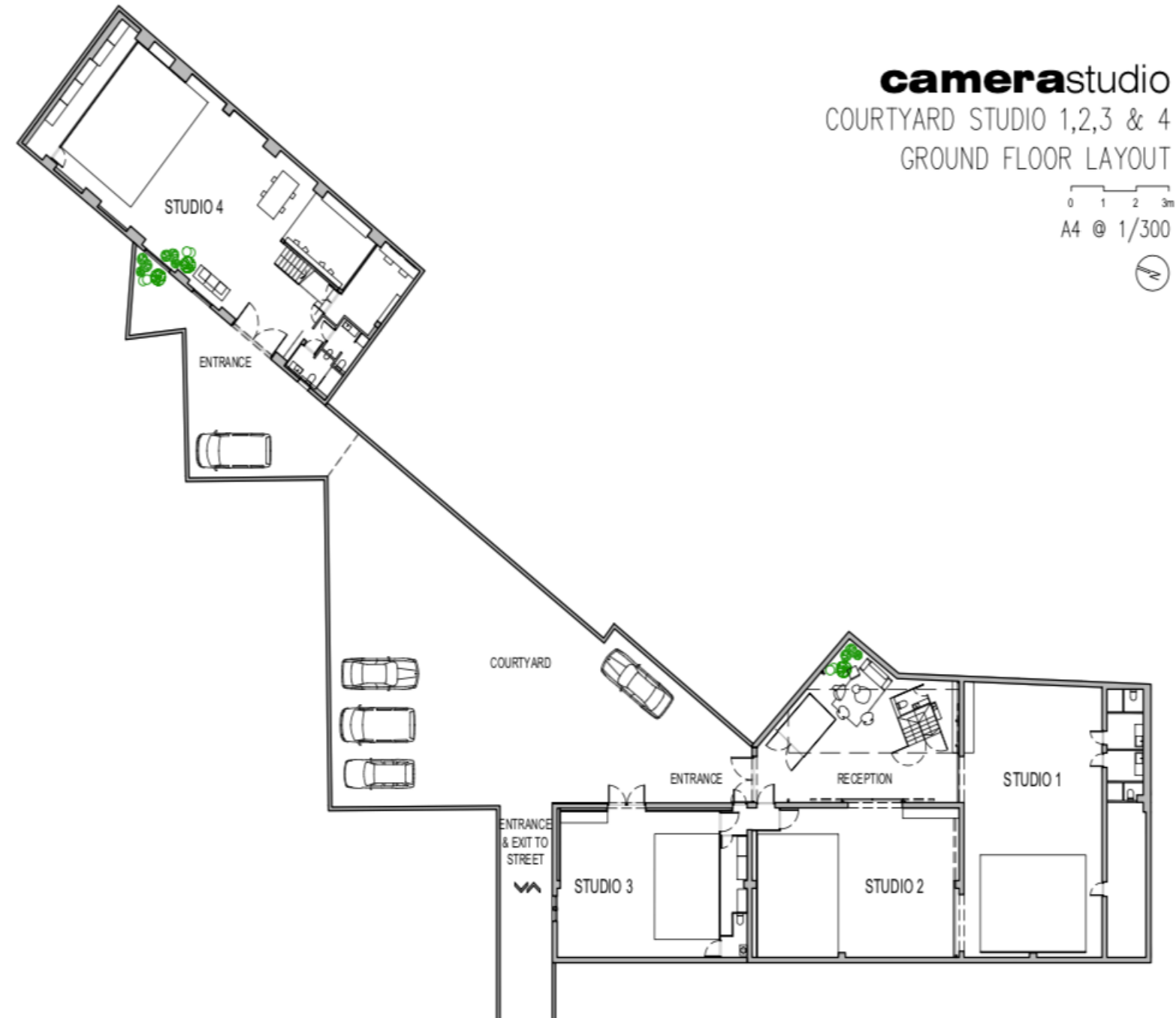
INDEX

FLOOR PLANS STUDIOS 1, 2, 3 and 4	4 - 7
STUDIO 1	8 y 9
STUDIO 2	10 y 11
STUDIO 3	12 y 13
STUDIO 4	14 y 15
STUDIO 5	16 y 17
FORFAIT OPTION 1	19
FORFAIT OPTION 2	20
FORFAIT OPTION 3	21
FLASH - EQUIPMENT INCLUDED IN HIRE	22
CONTINUOUS LIGHT - EQUIPMENT INCLUDED IN HIRE	23
HIRE TERMS AND CONDITIONS	25
CAMERA-RENT	26 y 27
CONTACT	28 y 29

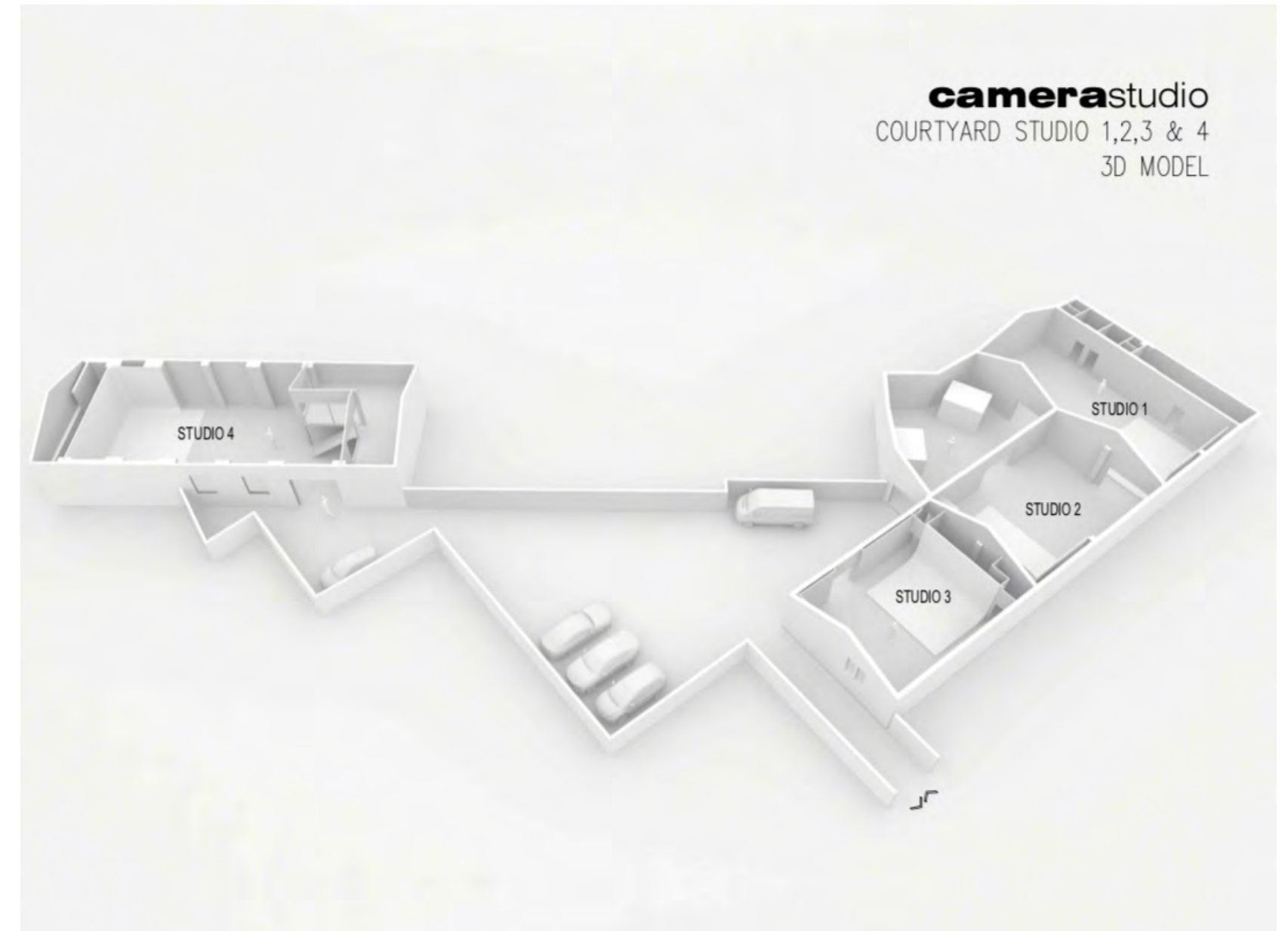
\*For more information click on each service

A studio you can trust

FLOOR PLANS STUDIOS 1, 2, 3 and 4

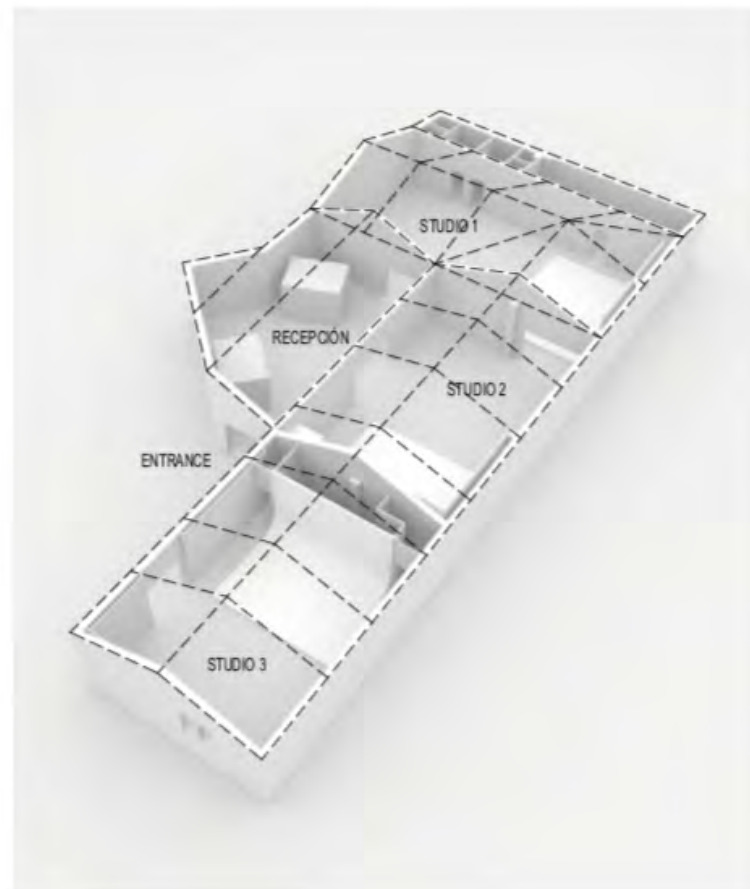
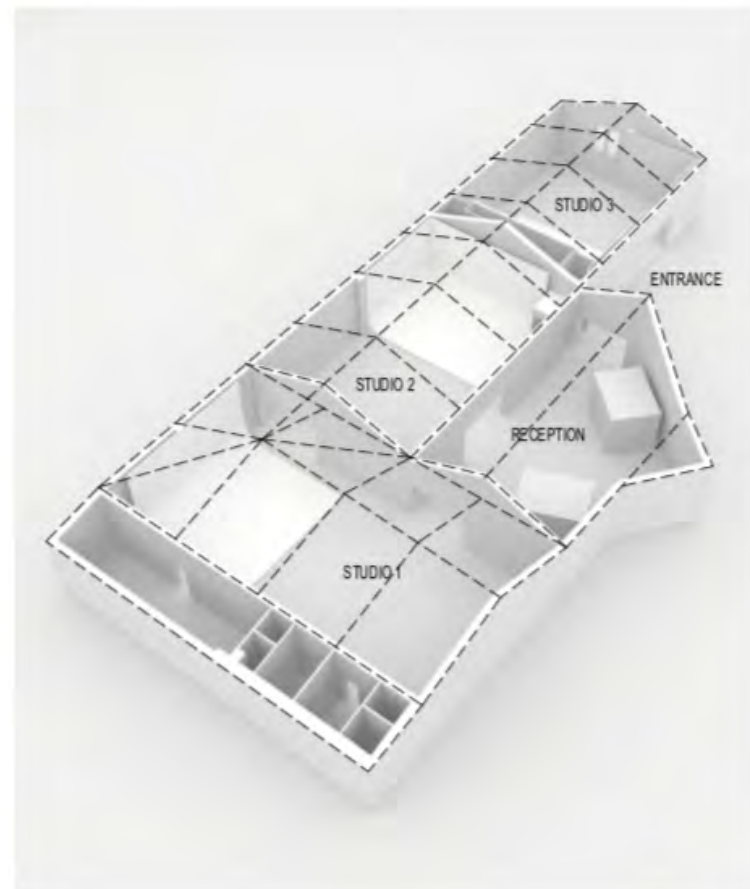


FLOOR PLANS STUDIOS 1, 2, 3 and 4



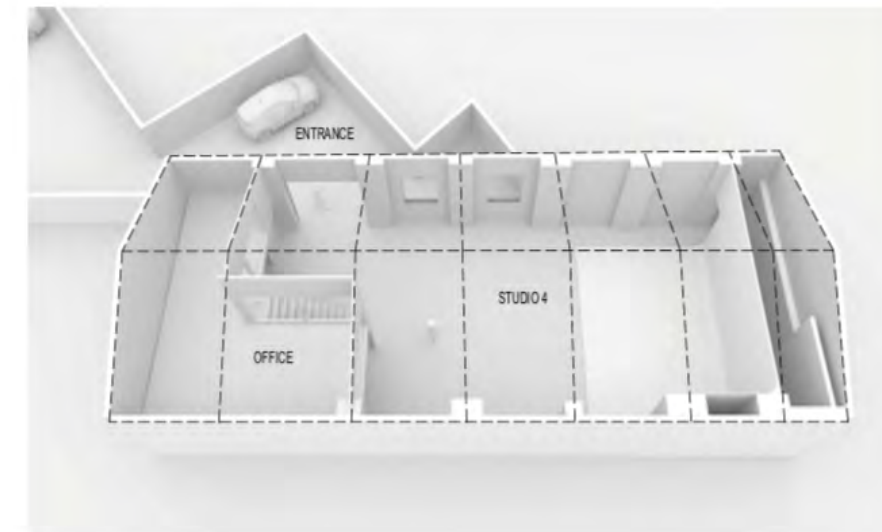
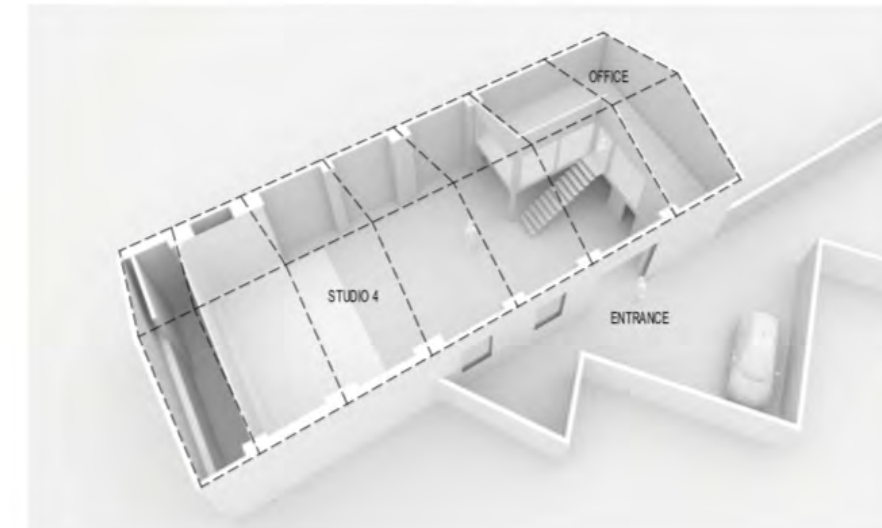
FLOOR PLANS STUDIOS 1, 2 and 3

camerastudio  
STUDIO 1, 2 & 3  
3D MODEL



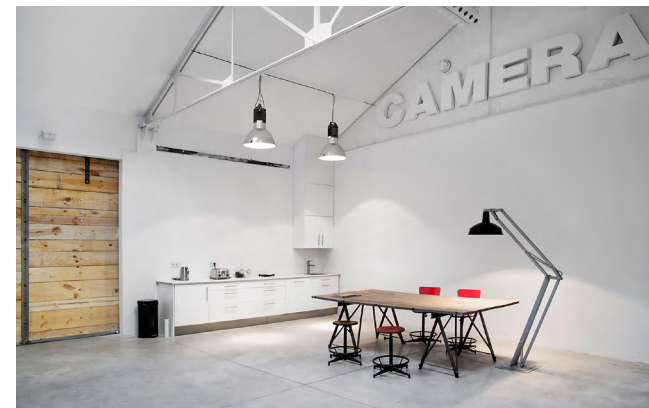
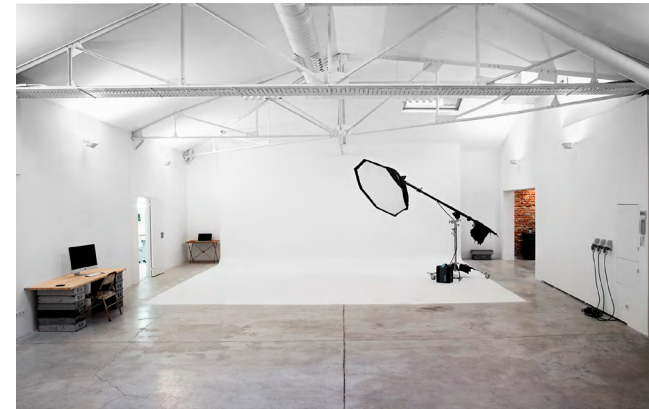
FLOOR PLAN STUDIO 4

camerastudio  
STUDIO 4  
3D MODEL



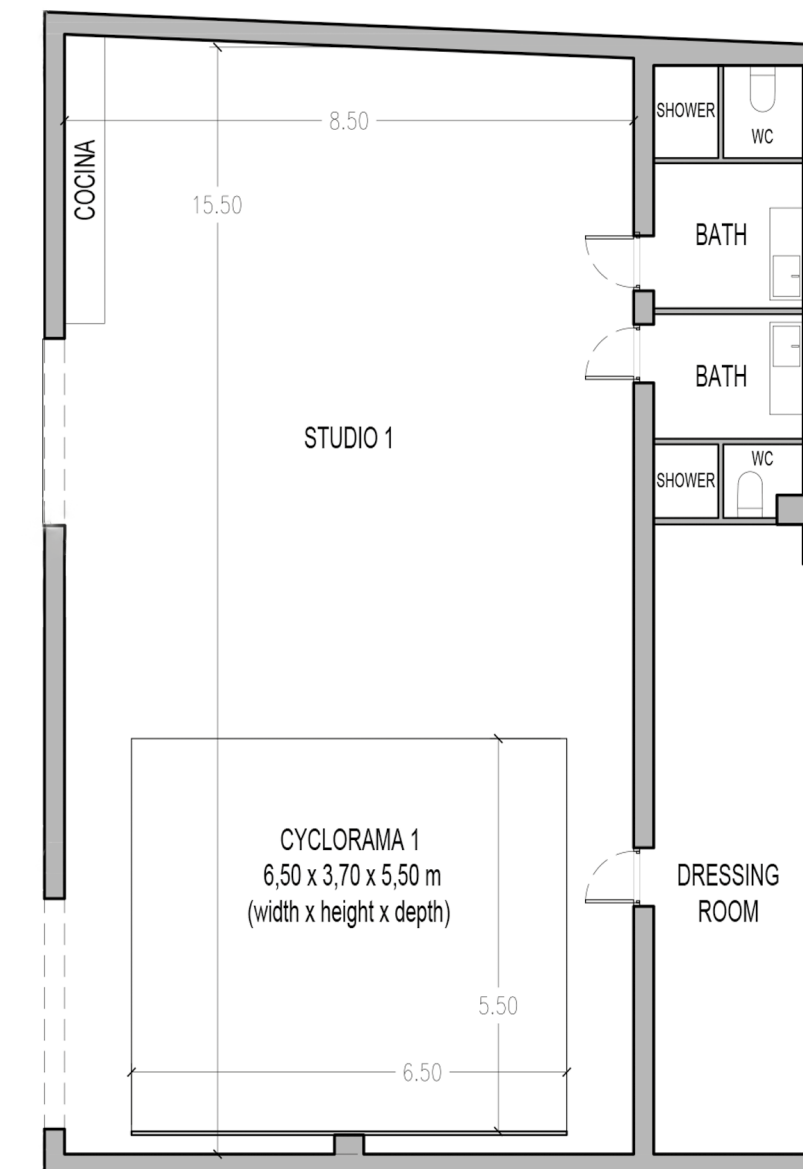
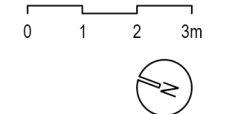
STUDIO 1

- 8,50 m x 15,50 m
- Gabled ceiling:  
Lateral height 3,70 m – Centre height 6,00 m
- West Side: wall to floor width:  
6,50 m – height: 3,70 m – length: 5,50 m
- East Side: wall to floor width:  
7,00 m – height: 3,70 m
- Wi-Fi access (1 GB optical Fiber)
- Fully equipped kitchenette
- Independent dressing room / make-up area
- 2 independent bathrooms with shower
- Dual hot / cold air conditioner 22.000 W
- Three-phase and single-phase electricity
- Blue-tooth audio system
- Vehicle access
- Private parking
- Possible Blackout
- Flash or continuous light included



FLOOR PLAN STUDIO PLAN 1

camerastudio  
GROUND FLOOR LAYOUT



8

9

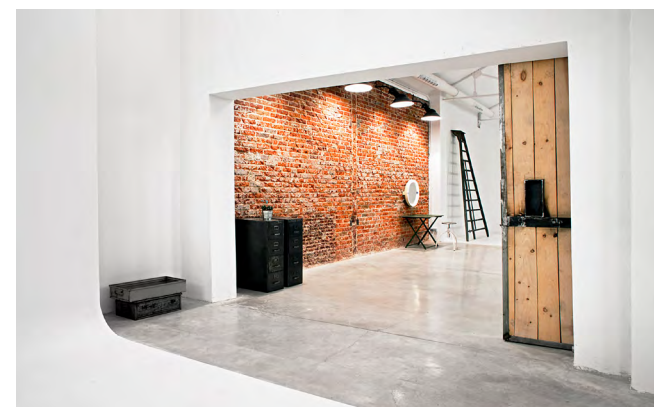
RATES

PRECIO

Full day hire 9 hours	600 €
Half day hire 4 hours	450 €
Extra hour (up to 9:00 pm)	65 €
Extra hour at night ( 9:00 pm to 8:00 am)	100 €
Saturdays, Sundays and bank holidays	+ 50 %

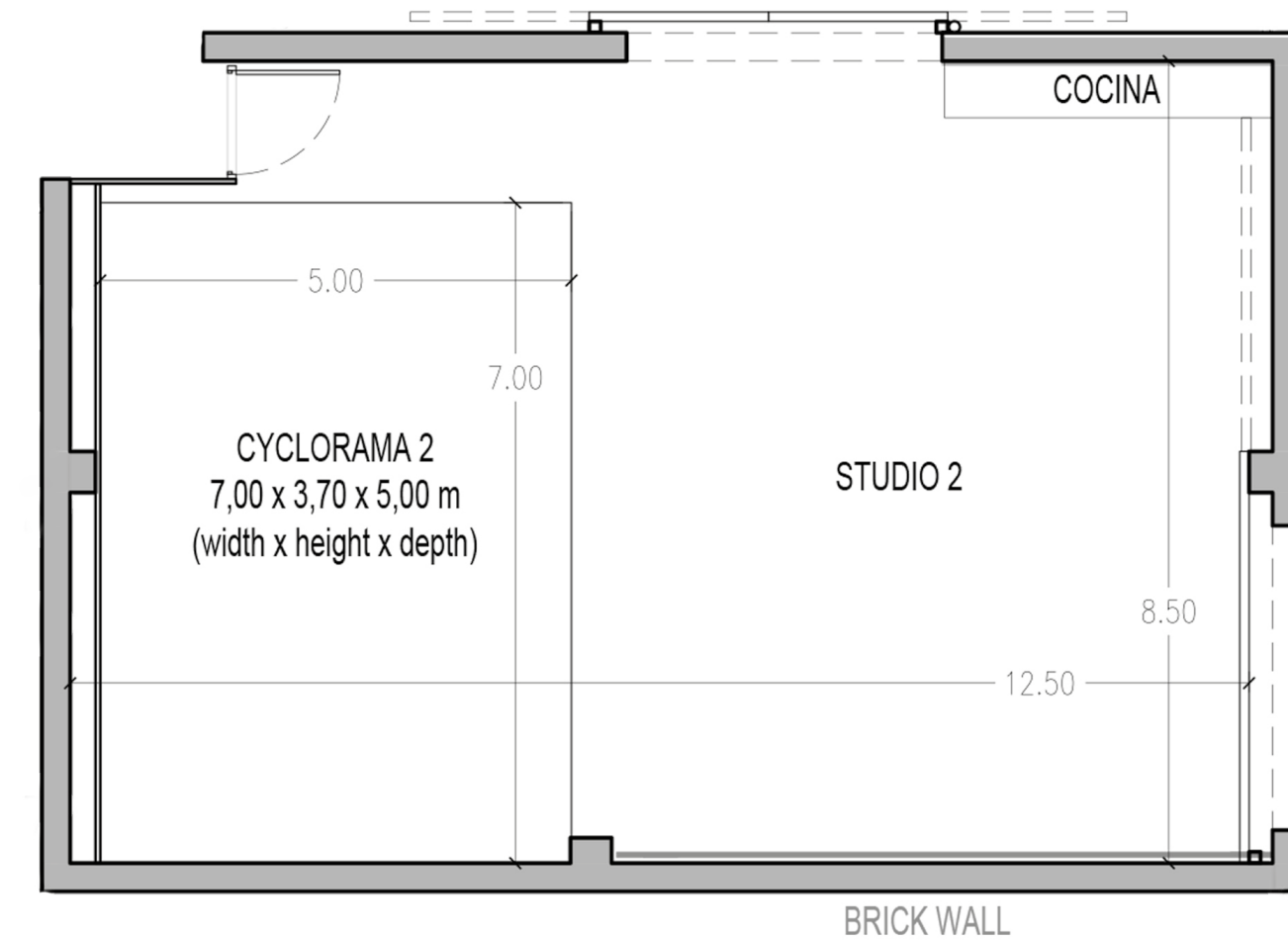
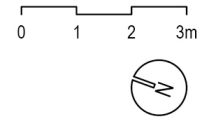
**STUDIO 2**

- 8,50 m x 12,50 m  
Zenith daylight 6,50 m x 8,00 m con palio opcional
- Gabled ceiling:  
Lateral height 3,70 m – Centre height 6,00 m
- Electrical ceiling curtains control system  
( 6,50 m x 8 m area)
- North side: corner cyclorama wall-Floor-wall width:  
7,00 m – height: 3,70 m – length: 5,00 m
- West side: old brick wall width: 6,00 m – height: 3,70 m
- Wi-Fi access (1 GB optical fiber)
- Fully equipped kitchenette
- independent make-up area
- 1 independent toilet
- Dual hot / cold air conditioner 22.000 W
- Three-phase and single-phase electricity
- Blue-tooth audio system
- Vehicle access
- Private parking
- Flash or continuous light: included



**FLOOR PLAN STUDIO PLAN 2**

**camerastudio**  
GROUND FLOOR LAYOUT



**RATES**

**PRICE**

Full day hire 9 hours	600 €
Half day hire 4 hours	450 €
Extra hour (up to 9:00 pm)	65 €
Extra hour at night ( 9:00 pm to 8:00 am)	100 €
Saturdays, Sundays and bank holidays	+ 50 %

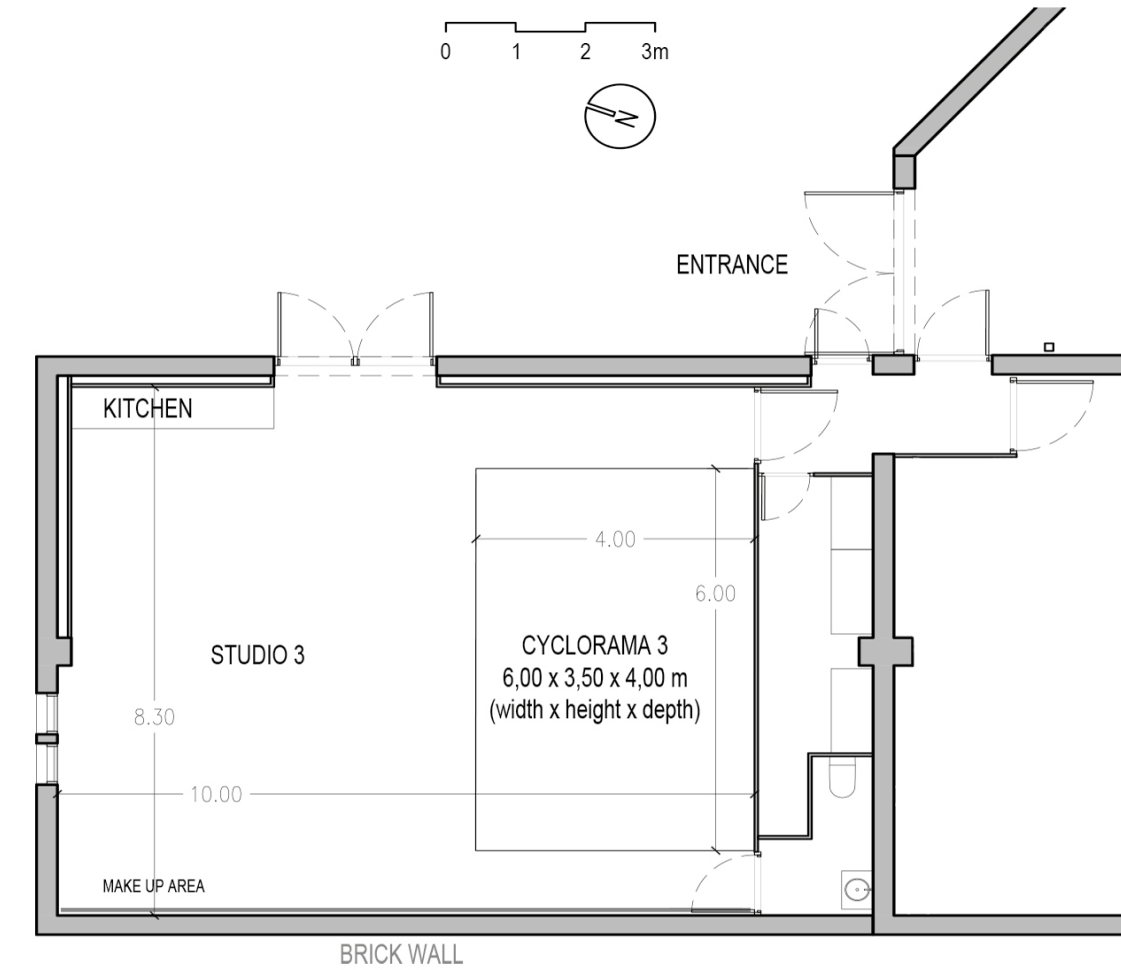
**STUDIO 3**

- 10,00 x 8,30 m
- Gabled ceiling:  
Lateral height 3.70 m – Centre height 6.00 m
- South side: corner cyclorama wall-Floor-wall width:  
7.00 m – height: 3.70 m – length: 5.00 m
- West side, brick wall:  
width: 10.00 m – height: 3.70 m
- Wi-Fi access (1 GB optical Fiber)
- Fully equipped kitchenette
- Dressing room / make-up area
- Independent toilet
- Dual hot / cold air conditioner 22.000 W
- Three-phase and single-phase electricity
- Blue-tooth audio system
- Vehicle access
- Private parking
- Flash or continuous light included



**FLOOR PLAN STUDIO PLAN 3**

**camerastudio**  
GROUND FLOOR LAYOUT



12

13

**RATES**

**PRICE**

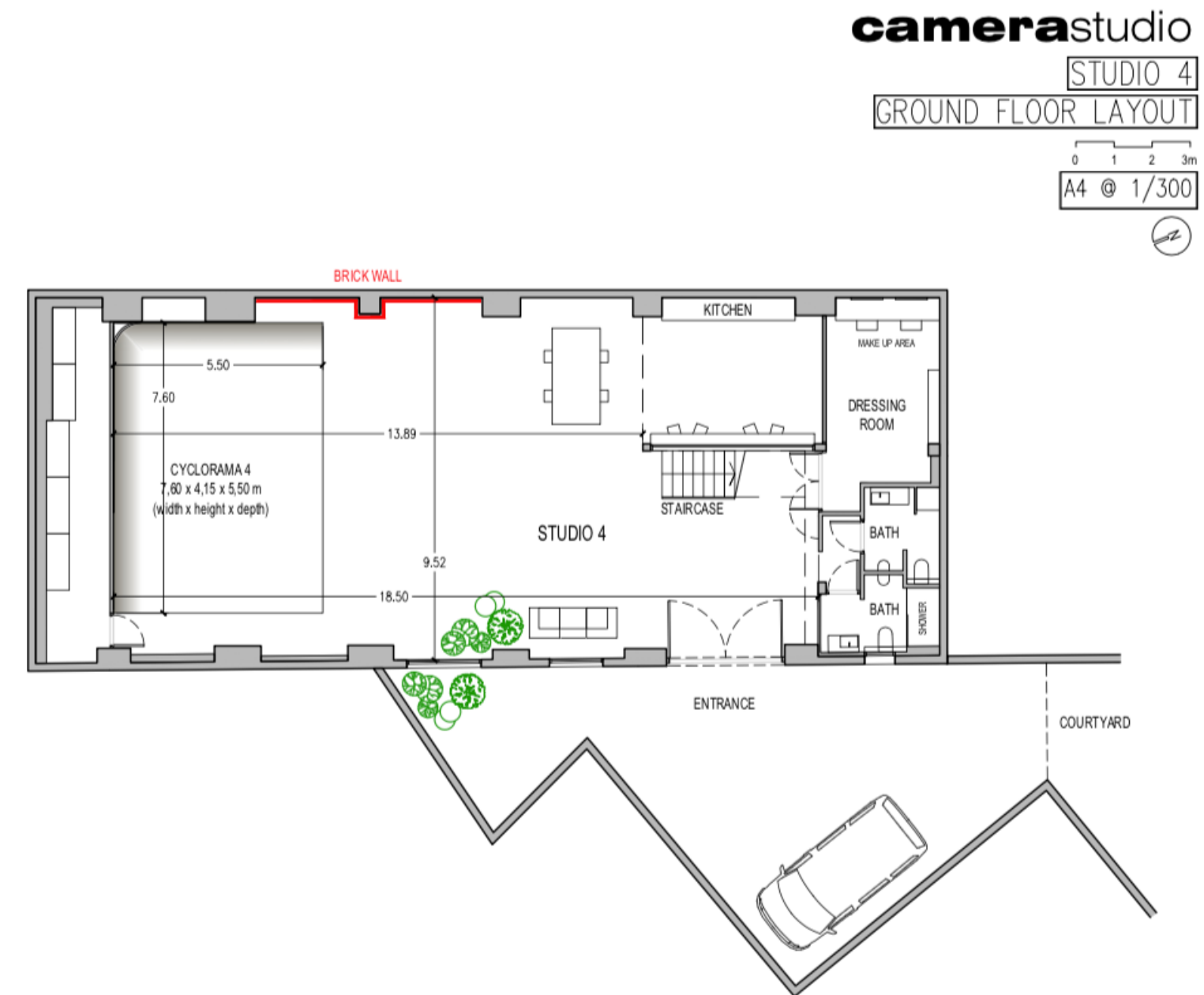
Full day hire 9 hours	550 €
Half day hire 4 hours	425 €
Extra hour (up to 9:00 pm)	65 €
Extra hour at night ( 9:00 pm to 8:00 am)	100 €
Saturdays, Sundays and bank holidays	+ 50 %

STUDIO 4

- 9,50 m x 18,50 m
- Gabled Ceiling::  
Lateral Height: 4.15 m, Centre Height: 6.00 m
- North Side, corner cyclorama wall-Floor-wall:  
width: 7.60 m – height: 4.15 m – length: 5.50 m
- East Side, wall to Floor:  
width: 6.00 m – height: 4.30 m
- Wi-Fi access (1 GB optical Fiber)
- Fully equipped kitchenette
- Production office 50 m2
- Independent dressing room / make-up area
- 2 independent bathrooms with shower
- Dual hot / cold air conditioner 28.000 W
- Three-phase and single-phase electricity
- Blue-tooth audio system
- Vehicle access
- Private parking
- Possible oscuridad total
- Flash or continuous light included



FLOOR PLAN STUDIO 4



14

15

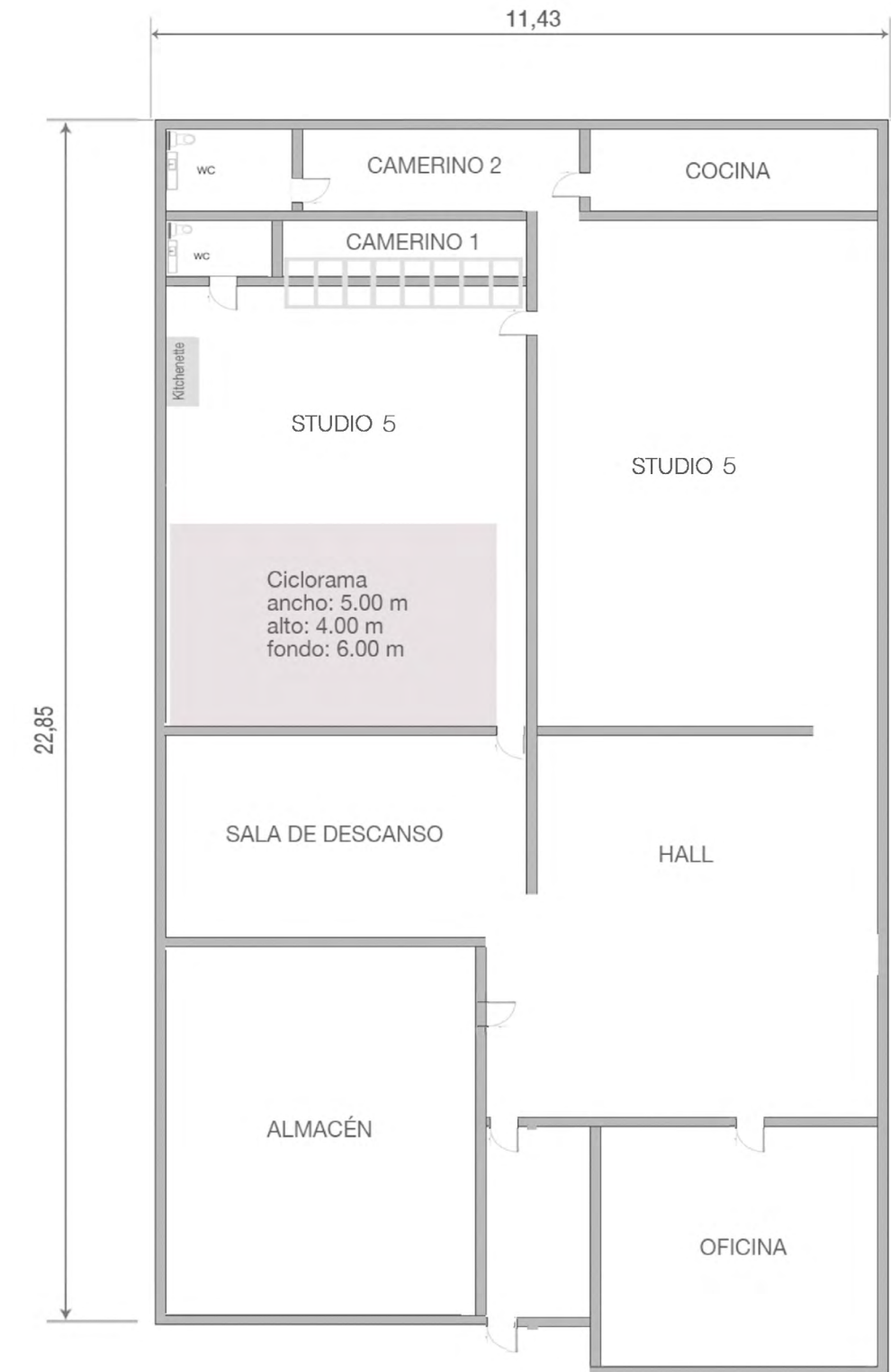
RATES	PRICE
Full day hire 9 hours	925 €
Half day hire 4 hours	650 €
Extra hour (up to 9:00 pm)	110 €
Extra hour at night ( 9:00 pm to 8:00 am)	165 €
Saturdays, Sundays and bank holidays	+ 50 %

STUDIO 5

- 11,43 m x 22,85 m
- Located at C/ Juan del Risco 37, bajo Interior, 28039 Madrid
- Gabled ceiling: lateral height 4 m, central height 6 m
- Electrical ceiling curtains control system (6,00 m x 25,60 m area)
- South side: corner cyclorama wall-Floor-wall width: 5.00 m – height: 4.00 m – length: 6.00 m
- 2 independent make-up areas
- 1 independent bathroom
- 1 independent toilet
- Fully equipped kitchenette
- Dual hot / cold air conditioner 18000 w
- Three-phase and single-phase electricity
- Wi-Fi access (1 GB optical fiber)
- Flash or continuous light included



FLOOR PLAN STUDIO 5



RATES	PRICE
Full day hire 9 hours	600 €
Extra hour (up to 9:00 pm)	65 €
Extra hour at night ( 9:00 pm to 8:00 am)	100 €
Saturdays, Sundays and bank holidays	+ 50 %

FORFAIT OPTION 1

- studio 1 + studio 2 + chill out area: 420 m2
- 2 dressing room / make-up area
- 3 independent bathrooms with shower
- 2 Fully equipped kitchenette
- Dual hot / cold air conditioner 22.000 W
- Three-phase electricity 40 KW
- Wi-Fi access (1 GB optical Fiber)
- Vehicle access
- Private parking
- Flash or continuous lighting included

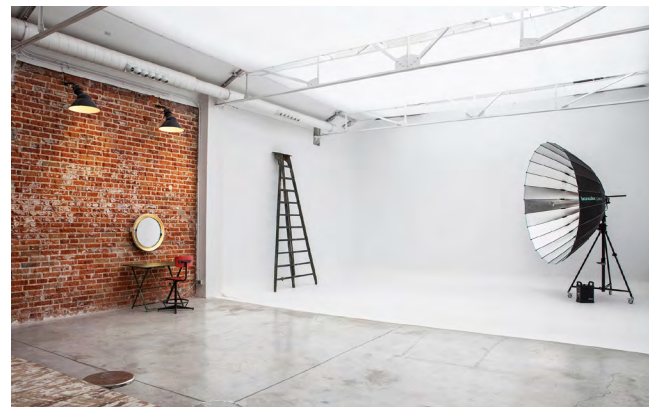
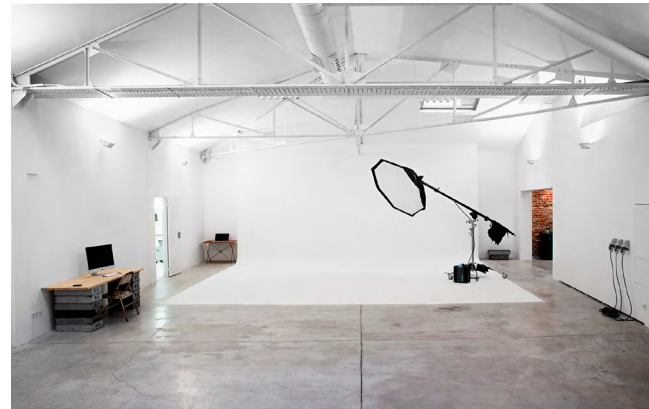


Forfait

RATES	PRICE
Full day hire 9 hours	1.450 €
Extra hour (up to 9:00 pm)	165 €
Extra hour at night ( 9:00 pm to 8:00 am)	220 €
Saturdays, Sundays and bank holidays	+ 50 %

FORFAIT OPTION 2

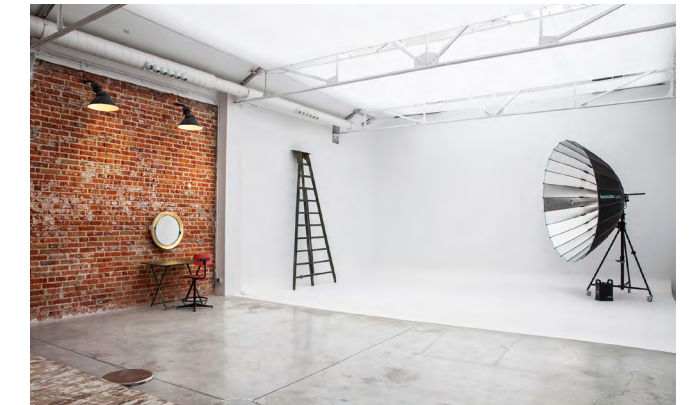
- studio 1 + studio 2 + studio 3 + chill out area: 500 m2
- 3 dressing room / make-up area
- 4 independent bathrooms with shower
- 3 Fully equipped kitchenette
- Dual hot / cold air conditioner 22.000 W
- Three-phase electricity 40 KW
- Wi-Fi access (1 GB optical Fiber)
- Blue-tooth audio system
- Vehicle access
- Private parking
- Flash or continuous light included



RATES	PRICE
Full day hire 9 hours	2000 €
Extra hour (up to 9:00 pm)	225 €
Extra hour at night ( 9:00 pm to 8:00 am)	285 €
Saturdays, Sundays and bank holidays	+ 50 %

FORFAIT OPTION 3

- Studio 2 + studio 3: 190 m2
- 2 dressing room / make-up area
- 2 independent bathrooms
- 2 Fully equipped kitchenette
- Dual hot / cold air conditioner 22.000 W
- Three-phase electricity 40 KW
- Wi-Fi access (1 GB optical Fiber)
- Blue-tooth audio system
- Vehicle access
- Private parking
- Flash or continuous lighting included



RATES	PRICE
Full day hire 9 hours	1150 €
Extra hour (up to 9:00 pm)	130 €
Extra hour at night ( 9:00 pm to 8:00 am)	200 €
Saturdays, Sundays and bank holidays	+ 50 %

FLASH EQUIPMENT INCLUDED IN HIRE

**STUDIOS**

- 2 x ProFoto Pro 10, Pro 11 or Broncolor Scoro S
- 3 x ProFoto or Broncolor Pulso G Flash Head
- 3 x Lighting accessories: square/rectangular Softboxes or umbrella S/M/L
- Stand and studio accessories



CONTINUOUS LIGHT EQUIPMENT INCLUDED IN HIRE

**STUDIOS**

- 1 x Broncolor HMI 1600 con Para 133/PAR KIT
- 1 x Kino Flo 4 Bank 4' - 1.20 m 3200 K o 5600K
- Stand and studio accessories
- 0.80€ Kw/hr Electricity Consumption
- 4€/hr Broncolor HMI Lamp Consumption



22 **STUDIO 1 and 2 or 2 and 3**

- 4 x ProFoto Pro 10 Pro 11 or Broncolor Scoro S
- 6 x ProFoto or Broncolor Pulso G Flash Head
- 6 x Lighting accessories: square/rectangular Softboxes or umbrella S/M/L
- Stand and studio accessories



**STUDIO 1 and 2 or 2 and 3**

- 1 x Broncolor HMI 1600 con Para 133
- 1 x Broncolor HMI 1600 PAR KIT
- 2 x Kino Flo 4 Bank 4' - 1.20 m 3200 K o 5600K
- Stand and studio accessories
- 0.80€ Kw/hr Electricity Consumption
- 4€/hr Broncolor HMI Lamp Consumption



HIRE TEARMS AND CONDITIONS

The Full day hire is 09 hours between 9am to 7pm

The half-day is between 9:00 a.m. and 2:00 p.m. in the morning and in the afternoon From 3:00 p.m. to 7:00 p.m

The hours that exceed these bands will be considered overtime. Night rate overtime will be applied after 9:00 pm

Hire options have to be confirmed 48hrs before the production. Any confirmed booking for the same date will replace any other option

Booking cancellations with less than 48 hrs in advance will incur a 50 % charge

Reservations of individual sets canceled less than 24 hours before the reservation, will be applied have a 100% charge

Saturday, Sunday and bank holidays only Full day hire available

Saturdays, Sundays and bank holidays in Madrid will incur an increase of 50% of the hire rate

camera-studio will inform all clients of the equipment included in the hire. Any other equipment will be charged separately

The responsibility for damages due to the misuse of equipment, furniture and infrastructures, will be of the client, even if these are caused by subcontractors

All equipment included in the hire price is subject to availability and it could be either Profoto or Broncolor

To reserve the studio 4 for productions with audio recording, it's necessary to specify the type of production it is

Forfait 1 and 2 reservation have to be confirmed 10 days in advance and advance payment has to be made

50% will be returned to the client if a Forfait cancelation is made between 10 and 7 days prior to the production

100% will be charged to the client if Forfait cancelation are made with less than 7 days notice

In the event of cancelling a production and extra equipment with less than 24 hours notice, the total quote amount will be charged

Human services reserved and cancelled with less than 24 hours notice, will be charged Fully

CAMERA-RENT

MADRID

Available 24/7 throughout the year, to meet all your high-end professional lighting equipment and camera requirements in Spain mainland.



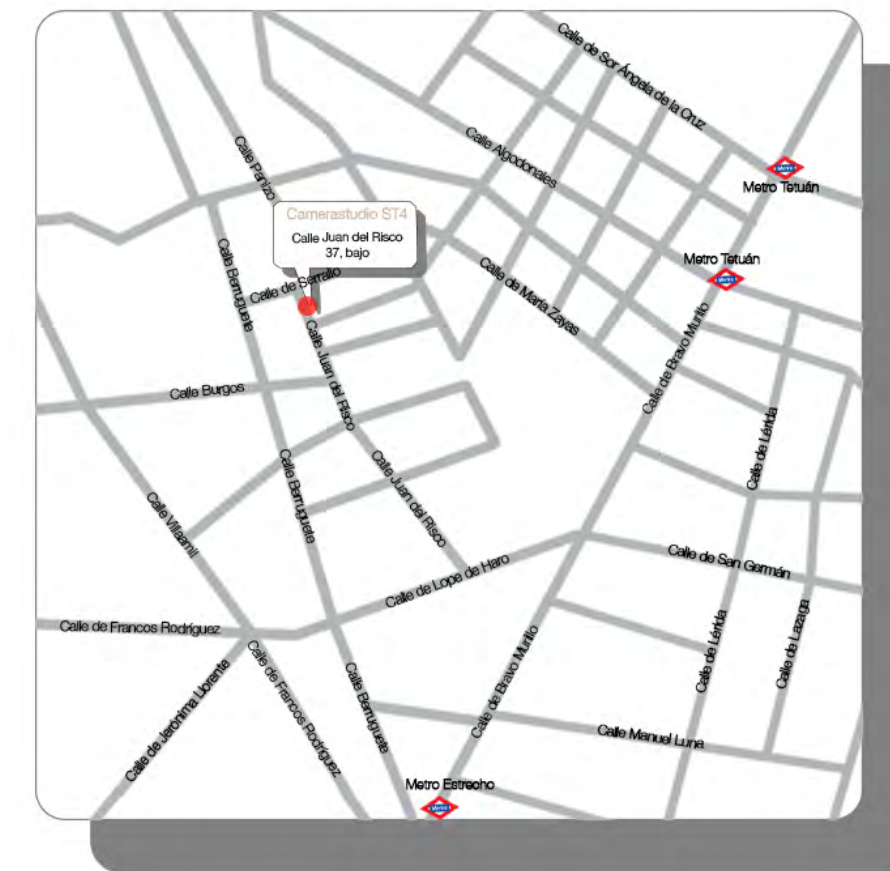
26 We offer all our support so you can have a flawless production.

27



C/ General Alvarez de Castro 12,  
Nave 11  
28010 Madrid  
Tel: 911 730 320 - 638 119 438  
[info@camera-studio.es](mailto:info@camera-studio.es)  
[www.camera-studio.es](http://www.camera-studio.es)

C/ Juan del Risco 37  
Bajo Interior  
28039 Madrid  
Tel: 911 730 320 - 638 119 438  
[info@camera-rent.es](mailto:info@camera-rent.es)  
[www.camera-rent.es](http://www.camera-rent.es)



**camera**studio

**camera**rent